

MISSOURI BANDMASTERS ASSOCIATION MISSOURI ALL-STATE BAND AUDITION MATERIALS

OBOE & ENGLISH HORN*

Scale: All scales are to be MEMORIZED.
 Prepare them all slurred and tongued in sixteenth notes at quarter note = 88.
 Scales should be performed ascending and descending. Scales given are the starting tone.
DO NOT TRANSPOSE.

All scales are to be prepared from required scale sheet as written.

Chromatic: Perform the chromatic exactly as written.

Major Scales: C G D A E B/Cb F#/Gb C#/Db Ab Eb Bb F

Minor Scales: a e b f# c# g#/ab d#/eb a#/bb f c g d

Books: *Selected Studies for Oboe - Voxman/Rubank Publication*
Advanced Method for Oboe, Vol. 1 – Voxman & Gower/Rubank Publication

Set I (2024-25)	Selected Studies	p. 6	F Major
	Advanced Method	p. 6	#6
		p. 6	#7
		p. 6	#8
		p. 36-37	#20

Set II (2025-26)	Selected Studies	p. 8	d minor
	Advanced Method	p. 7	#13
		p. 10	#28
		p. 10	#29
		p.23	#5

New sets will be released in 2026



MISSOURI ALL-STATE-BAND AUDITION SCALES

to be played at a minimum tempo of quarter note = 88

Oboe

Chromatic Scale

The chromatic scale is written on two staves in 4/4 time. The first staff shows the ascending scale from C4 to C5, and the second staff shows the descending scale from C5 to C4. Each note is marked with a sharp or flat to indicate its chromatic movement.

Missouri ASB Major Scales

C Major Scale

The C major scale is written on a single staff in 4/4 time, showing the ascending and descending sequences of notes.

G Major Scale

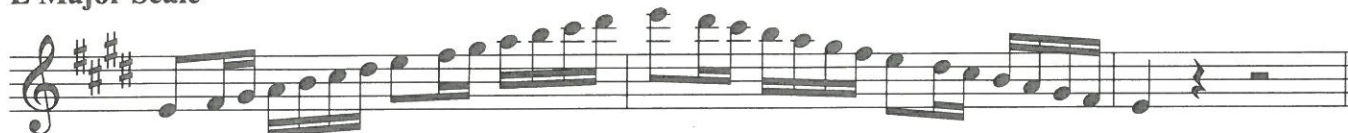
The G major scale is written on a single staff in 4/4 time, starting with a one-sharp key signature (F#) and showing the ascending and descending sequences of notes.

D Major Scale

The D major scale is written on a single staff in 4/4 time, starting with a two-sharp key signature (F#, C#) and showing the ascending and descending sequences of notes.

A Major Scale

The A major scale is written on a single staff in 4/4 time, starting with a three-sharp key signature (F#, C#, G#) and showing the ascending and descending sequences of notes.

E Major Scale**B Major Scale****Cb Major****F# Major Scale****Gb Major Scale****C# Major Scale****Db Major Scale**

Ab Major Scale**Eb Major Scale****Bb Major Scale****F Major Scale****Missouri ASB Melodic Minor Scales****A Melodic Minor****E Melodic Minor**

B Melodic Minor**F# Melodic Minor****C# Melodic Minor****G# Melodic Minor****A \flat Melodic Minor****D# Melodic Minor****E \flat Melodic Minor**

A# Melodic Minor**Bb Melodic Minor****F Melodic Minor****C Melodic Minor****G Melodic Minor****D Melodic Minor**

F Major

FEDOROW

Andante

p

(1)

(2)

cresc.

cresc.

f

mf

accel.

e *cresc.* *f* *rall.*

a tempo *p*

pp

(1)

(2)

4

simile

simile

Various articulations may be used in the chromatic, the interval, and the chord studies at the instructor's option.

5

6

Exercise in thirds

F (forked F)

F

F

F

No register key

7

Common chord

8

Dominant 7th chord

F

F

F

F

F

F

F

9

Natural

Melodic

A Minor

The sign ^ indicates a half-step

Harmonic

1 1/2

10

The first system of the piano score consists of four staves. The first two staves are the right and left hands, respectively, in a grand staff. The music is in a key with two flats (B-flat and E-flat) and a 3/4 time signature. The first staff begins with a piano (*p*) dynamic. The second staff also has a piano (*p*) dynamic. The third staff has a mezzo-forte (*mf*) dynamic. The fourth staff features triplet markings (*3*) over the right hand in the final two measures.

Moderato (♩ = 88)

BARRET

The second system of the piano score consists of four staves. The first staff begins with a piano (*p*) dynamic and includes a mezzo-forte (*mf*) dynamic marking. The second staff includes a mezzo-forte (*mf*) dynamic marking and a piano (*p*) dynamic marking. The third staff includes a mezzo-forte (*mf*) dynamic marking. The fourth staff includes a *dim.* (diminuendo) marking and a piano (*p*) dynamic marking.

Musical staff with notes and dynamics: *cresc.* and *dim.*

Musical staff with notes and dynamics: *a tempo*, *poco rit.*, *p*

Musical staff with notes and dynamics: *rf*

Musical staff with notes and dynamics: *f*, *p*

Andante (♩=152)

BROD

Musical staff with notes and dynamics: *p*

Musical staff with notes and dynamics

Musical staff with notes and dynamics: *mf*, *sf*, *f*