

MISSOURI BANDMASTERS ASSOCIATION MISSOURI ALL-STATE BAND AUDITION MATERIALS

TUBA

Scale: All scales are to be MEMORIZED.

Prepare them all slurred and tongued in sixteenth notes at quarter note = 88.

Scales should be performed ascending and descending. Scales given are the starting tone.
DO NOT TRANSPOSE.

All scales are to be prepared from required scale sheet as written.

Chromatic: Perform the chromatic exactly as written.

Major Scales: C G D A E B/Cb F#/Gb C#/Db Ab Eb Bb F

Minor Scales: a e b f# c# g#/ab d#/eb a#/bb f c g d

Books: *Advanced Method for Tuba, Vol. II – Voxman/Rubank Publication*

Practical Studies for Tuba, Book II – Getchell/Belwin Publication

Set I (2024-25)	Advanced Method	p. 11	#12 (tongue 2, slur 2)
		p. 21	#58
		p. 43	#26
		p. 44	#28
	Practical Studies	p. 11	#84
		p. 31	#114

Set II (2025-26)	Advanced Method	p. 23	#65 (slur 2, tongue 2)
		p. 30	#1
		p. 51	#12
		p. 54-55	#20 – all
	Practical Studies	p. 8	#78
		p. 27	#110

New sets will be released in 2026



MISSOURI ALL-STATE-BAND AUDITION SCALES

to be played at a minimum tempo of quarter note = 88

Tuba

Chromatic Scale

Missouri ASB Major Scales

C Major Scale

G Major Scale

D Major Scale

A Major Scale

E Major Scale

B Major Scale



Cb Major Scale



F# Major Scale



Gb Major Scale



C# Major Scale



Db Major Scale

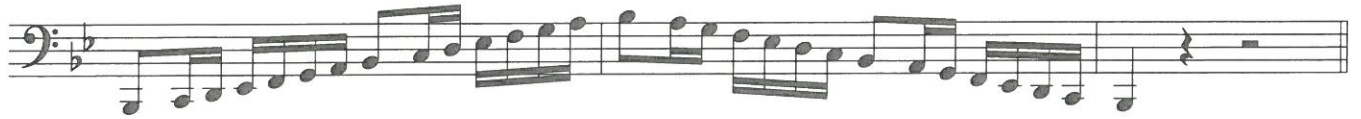


Ab Major Scale



Eb Major Scale



Bb Major Scale**F Major Scale**

Missouri ASB Melodic Minor Scales

A Melodic Minor**E Melodic Minor****B Melodic Minor****F# Melodic Minor****C# Melodic Minor**

G# Melodic Minor**Ab Melodic Minor****D# Melodic Minor****Eb Melodic Minor****A# Melodic Minor****Bb Melodic Minor****F Melodic Minor****C Melodic Minor**

G Melodic Minor



D Melodic Minor



simile

10 Scale in Thirds

11 Common Chord

12 Dominant 7th Chord

B \flat Minor

13 Natural Harmonic

Melodic

14 *Cor* *simile*

Scale in Thirds

54

Common Chord

55

Diminished 7th Chord

56

D Major

57

58

mf

f

Andante mosso

BORGI

B♭ Bass only

26

p e legato

crescendo

f

p

f

p

p

f

p

Adagio

KLING

B♭ Bass only

27

f

p

pp

pp

Lively

HÖHNE

BB \flat Bass only

28

mf *p* *p* *do* *f* *fp* *fp* *f* *mf* *mf* *fp*

cre *scen*

Majestically

PFLEGER

29

f *Più mosso* *pp*

Moderato

mf 3 3 3 3 3 3 (*simile*)

Cantabile

mf 3 3 (*simile*)

Grandioso

f

3

3

mp

f

3

molto rit......

Largo

mf

D. C. al Coda

CODA

Allegro

f

3

3

3

3

3

molto ritard......