

MISSOURI BANDMASTERS ASSOCIATION MISSOURI ALL-STATE BAND AUDITION MATERIALS

TREBLE CLEF BARITONE

Scale: All scales are to be MEMORIZED.

Prepare them all slurred and tongued in sixteenth notes at quarter note = 88.

Scales should be performed ascending and descending. Scales given are the starting tone.
DO NOT TRANSPOSE.

All scales are to be prepared from required scale sheet as written.

Chromatic: Perform the chromatic exactly as written.

Major Scales: C G D A E B/Cb F#/Gb C#/Db Ab Eb Bb F

Minor Scales: a e b f# c# g#/ab d#/eb a#/bb f c g d

Books: *Arban Complete Conservatory Method for Trumpet, #021 – Goldman (edited)/
Carl Fischer Publication*

Set I (2024-25)	Arban	p. 22	#48
		p. 46-47	#28 – all
		p. 125	#1 – lines 5, 11, & 13 (E, Bb, C)
		p. 190	#142
		p. 205	#53
		p. 290	#6 – first 6 lines (to key change)

Set II (2025-26)	Arban	p. 22	#49
		p. 33	#31
		p. 56	#69 – lines 2, 10, & 12 (F, A, G)
		p. 189	#139
		p. 293	#9 – first 5 lines
		p. 328	Andante Moderato – first 6 lines

New sets will be released in 2026



MISSOURI ALL-STATE-BAND AUDITION SCALES

to be played at a minimum tempo of quarter note = 88

Treble Clef Baritone

Chromatic Scale

Missouri ASB Major Scales

C Major Scale

G Major Scale

D Major Scale

A Major Scale

E Major Scale

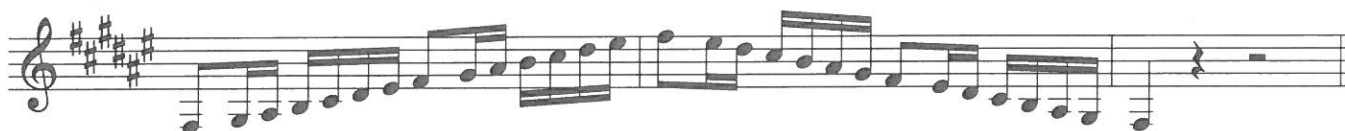
B Major Scale



Cb Major Scale



F# Major Scale



Gb Major Scale



C# Major Scale



Db Major Scale



Ab Major Scale



Eb Major Scale



G# Melodic Minor**A \flat Melodic Minor****D# Melodic Minor****E \flat Melodic Minor****A# Melodic Minor****B \flat Melodic Minor****F Melodic Minor****C Melodic Minor**

G Melodic Minor



D Melodic Minor





27. $\text{♩} = 108$

This musical exercise consists of 12 staves of music in 2/4 time, with a tempo of 108 quarter notes per minute. The piece is characterized by continuous eighth-note triplets. The first staff begins with a treble clef and a key signature of one sharp (F#). The second staff includes a guitar-style fingering sequence: 3 0 3 0 3 0 3 0 3 0 3 0 3 0. The key signature changes to two sharps (D major) in the third staff, then to one sharp (F# major) in the fourth, and finally to one flat (Bb major) in the fifth. The sixth staff introduces a first ending bracket with a double bar line and a first ending mark. The seventh staff continues with the first ending. The eighth staff introduces a second ending bracket with a double bar line and a second ending mark. The ninth staff continues with the second ending. The tenth staff continues the piece. The eleventh staff continues the piece. The twelfth staff concludes the exercise.

28. $\text{♩} = 96$


This musical exercise consists of 3 staves of music in 2/4 time, with a tempo of 96 quarter notes per minute. The piece features eighth-note triplets and accents. The first staff begins with a treble clef and a key signature of one sharp (F#). The second staff includes a guitar-style fingering sequence: 1 3 1 3 1 3. The key signature changes to one flat (Bb major) in the third staff. The piece concludes with a first ending bracket and a first ending mark.

29. $\text{♩} = 96$

30. $\text{♩} = 84 - 100$

1. ^{**} $\text{♩} = 56 - 108$

* Refer to p. 123

** Practice in the following four ways: 1) single tongue 2) slur two notes up 

3) slur two notes down  4) slur all in one breath

142. $\text{♩} = 96$
 Tu tukutu ku tu

143. $\text{♩} = 104$
 Tukutukutu

144. $\text{♩} = 96$
 Tutuku tu tu tu

145. $\text{♩} = 100$
 Tutu kutu tu tu tu tu kutu tu tu tu tu kutu tu tu tu tu kutu tu tu kutu

THE EXILE'S LAMENT.

Con espressione.

Rich. Albert.

52. *p* *a tempo* *agitato.* *dolce.* *rall.* *rall.* *p* *a tempo.* *rall.*

SICILIAN VESPER.

All^o agitato espress.

Verdi.

53. *p* *f* *dim.* *dim.*

I THINK OF THEE.

Andantino.

F. Abt.

54. *f* *pp* *poco riten.* *string.* *f rit.* *pp* *pp* *p* *poco riten.* *string.* *f rit.*

Moderato. $\text{♩} = 76$

6. *mf*

p

pp

f

mf

p *pp*

cresc. *dim. e rall.* *mf a tempo*

p

f